



High Precision Angular Contact Ball Bearings double row

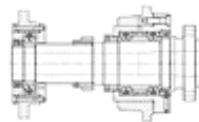
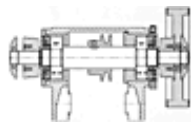
sizes per Type Series 70, 72,73,
 low-friction, low noise, rolling contact ball guide,
 self-adjusting preload, increased number of balls,
 running during extended lifetime with high precision.
 16° contact angle, face-to-face orientation,
 standardised per DIN 628 part 5
 Precision ABEC 5...7...9...HQ

two rows within the space of a single row bearing
 Type K (factory standard)
 Type UK (dimensional series 20)
 Type UL, UM (Type series 72, 73)

Bearing selection
 see below

Design Example

High Precision Angular Contact Bearing with anti-friction ball guidance



click to enlarge

Specifications about your bearing of interest

Type Series K (factory standard), Type Series UK (dimensional series 20)
 Type Series UL, UM (Type series 72, 73)

Type Series Size d Size D

Dimensions		Load capacity	Limbic-rpm
------------	--	---------------	------------

about UKF			UKF-Type		C ₀	C	r _{limit}	Spindle Units
d	D	B			N	N	grease lubrication	min
mm					N	N	oil-air lubrication	
No matches were found.								

<p>Name:</p> <p>Company:</p> <p>E-Mail:</p> <p>Your Request:</p>	<table border="1" style="margin-left: auto; margin-right: auto;"> <tr> <th colspan="4" style="background-color: #ffffcc;">Selected types.</th> </tr> <tr> <th colspan="3">Dimensions</th> <th>UKF-Type</th> </tr> <tr> <td>d</td> <td>D</td> <td>B</td> <td></td> </tr> <tr> <td colspan="3" style="text-align: center;">mm</td> <td></td> </tr> <tr> <td colspan="4" style="background-color: #ffffcc;"> </td> </tr> </table>	Selected types.				Dimensions			UKF-Type	d	D	B		mm							
Selected types.																					
Dimensions			UKF-Type																		
d	D	B																			
mm																					

[back to top](#)